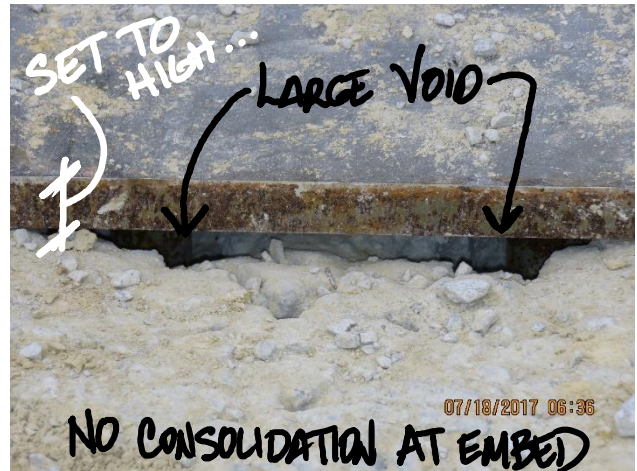
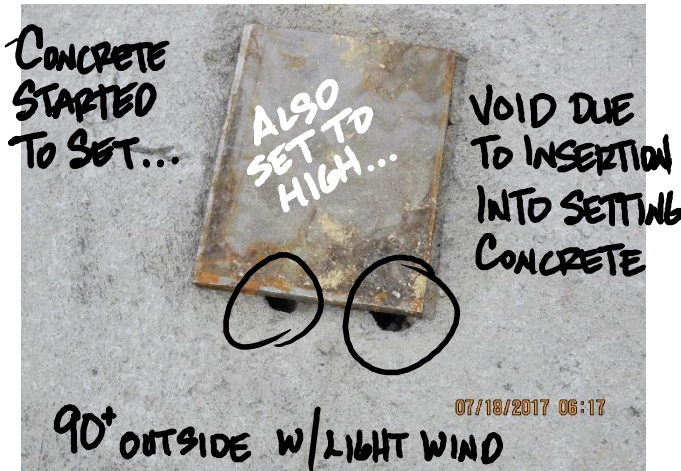




**ACI 301, Section 2.3.1.12, Embedded items are NOT to be placed in after the or during the concrete pour. These items must be pre-located, verified for height and X/Y location.**



We have had issues arise out of incorrectly placed embeds on several of our projects recently when they did not follow the specifications and/or ACI embed placement requirements. This issue has affected schedule and has cost a lot of money to correct.

*Note that all issues were by contractors that have performed this task many times in the past without pre-placement...*

**We should not accept mucking in the embeds.**

**Please discuss with your concrete contractor early in the process to set expectations at the beginning.**

